

Innovative  
Sustainable  
Products  
Solutions



Construction  
Chemicals





## About Us

Star Coatings Incorporated in year 2000, Active in designing construction chemicals & waterproofing systems since last 22 years. Joins Hands with XCHEM Polymers India Pvt. Ltd. In year 2022 to serve our customers better than earlier.

Introduced water-based liquid applied membranes systems in the Indian market. EMB & SPR are synonyms of LM Nowadays.

Our state of art manufacturing facilities are in VALSAD, VADODARA (INDIA) & RAK (UAE).

We are having our product presence in 10 + countries. We believe in delivering quality products sustainable systems with zero tolerance.

Our world class R&D facilities enable us to deliver products needed by market.

We are having capabilities and capacities to design and produce all most all products required by Construction Chemicals Professionals.



### Our Associates

**X-Chem International LLC, RAK,**  
UAE  
[www.xchem.ae](http://www.xchem.ae), [info@xchem.ae](mailto:info@xchem.ae)

**Bitumag**  
Gujarat, India  
[www.bitumag.co.in](http://www.bitumag.co.in), [info@bitumag.co.in](mailto:info@bitumag.co.in)

## Waterproofing Products

### Integral Waterproofing Compound

• ENICON – L® .....	01
• STAR-330 PW .....	02
• ENIROOF EMB® .....	03
• ENIROOF SPR® .....	04
• ENIROOF EMB PU .....	05
• ENIROOF SPU .....	06
• ENIROOF BLACK .....	07

### Cement Based Waterproof Coating

• AQUAGUARD 1C .....	08
• AQUAGUARD 2C 40 .....	09
• AQUAGUARD 2C 50 .....	10
• AQUACRETE BA 30 .....	11
• AQUAGUARD – 50%® .....	12

### Crystalline Waterproof System

• STARKRYST 110 WP .....	13
• STARKRYST 770 .....	14

### Concrete Repair Products

• DI PRIMER .....	15
• AQUAGUARD BA 20 .....	16
• AQUACRETE – 30%® .....	17
• ENIPOXY-BA 304 .....	18
• STAR CRACKFILL .....	19
• STARMICRO C .....	20
• ENICEM 100 .....	21
• STARMORTAR HS C .....	22
• STARMORTAR EP 2C .....	23
• STARMORTAR EP 3C .....	24
• STARMORTAR FASTSET .....	25

### Water Repellents/Curing Compound/Deshuttering Agents & Building Coatings

• ENIROOF CLEAR .....	26
• STARSEAL HD .....	27
• ENIWEATHER BRIGHT .....	28
• STAR CURE 100 .....	29

### Protective Coatings

• ENIPOXY – CT 340 .....	30
--------------------------	----

### Joint Sealant & Grouting Products

• ENISEAL – NS .....	31
• ENISEAL PU .....	32
• STARFLEX TAPE .....	33
• ENIGROUT GP .....	34
• ENIGROUT HS .....	35
• STARGROUT E-53 .....	36
• STARINJECT C-55 .....	37
• STARINJECT E-54 .....	38
• STARINJECT PU-55 .....	39

<b>Concrete Admixtures</b> .....	40
----------------------------------	----

<b>Bituminous Membranes</b> .....	41
-----------------------------------	----

<b>Some Prestigious Clients</b> .....	43
---------------------------------------	----

# INTEGRAL WATERPROOFING COMPOUND

**ENICOL L®**

**XCHEM**  
BONDING TOGETHER

Anti-Corrosive Integral Liquid Waterproofing Compound  
(Conforms to IS 2645, DIN 1042)

**ENICOL L** is an integral waterproofing admixture for concrete / mortar which chemically converts the water-soluble compounds present in concrete / mortar into stable water insoluble compounds. It has good plasticizing properties, makes concrete cohesive and prevents segregation. It is used for all types of concrete / mortar requiring water impermeability.



## Recommended Uses

- Tanks. Terraces. Foundations Basements.
- Bathroom walls/floors.
- External & internal plasters etc.

## Dosage

0.4 % of **ENICOL L** by weight to be mixed with cement or 200 ml. of **ENICOL L** per 50 kg. Bag of cement is to be used.

## Area of Application

- Basement concrete.
- Underground structures.
- Terrace concrete.
- Mortars/Plasters/Renderings.

## Packing

**ENICOL L** is packaged in 1 Kg., 5 Kg., 10 Kg. & 20 kg. Jerry Can.

## STAR 330 PW

Chloride Free Anticorrosive Integral Powder Additive for Concrete & Mortar

**STAR 330 PW** is a fine, yellowish white powder additive for use with concrete or cement mortar mixes. **STAR 330 PW** powder is a traditional admixture system developed by latest technology of chemical engineering. **STAR 330 PW** fill natural pores within the concrete or mortar matrix to reduce porosity and improve water tightness. **STAR 330 PW** does not contain any added chloride ions ensuring that the product does not support corrosion of reinforcing steel.



### Advantages

- Improved workability.
- Reduced water content for a given workability In the hardened concrete.
- No added chlorides, conforms to the most stringent chloride ion limits, will not initiate or promote the corrosion of reinforcing steel.
- Increased density and durability.
- Reduced permeability-improved water tightness.
- Reduced cracking.
- Confirms to: (IS 2645, DIN 1042)

### Dosage

With normal concrete and sand/cement mortar mixes use 500 grams of **STAR 330 PW** Powder for every 25 kg bag of cement.

### Area of Application

- Basement concrete.
- Underground structures.
- Terrace concrete.
- Can be added in cement mix for better results.

### Packing

**STAR 330 PW** is available in 500 grams Pouch & 25 Kg Bags.

## ENIROOF EMB



### Elastomeric Waterproof Coating

**ENIROOF EMB** is a scientific blend of synthetic resins, selected minerals and fillers base being high quality Bitumen. **ENIROOF EMB** is a protective and waterproof coating. It is a high performance coating that dries to elastic, flexible, impermeable waterproof membrane.



### Advantages

- Easy and direct (cold applied) application, no pre heating required.
- Provides an impervious waterproofing membrane that protects concrete structure and brick foundations against chloride and sulphate ions present in soils and water.
- Corrosion resistant and vapor barrier.

### Recommended Uses

- Useful as protective coating on concrete and brick foundations, retaining walls, timber, metals, etc.
- Provides a sandwich membrane in new construction and surface treatment on existing slabs.
- Damp – proofing of regular surfaces like concrete and asbestos. Provides a key for plaster on difficult surfaces.
- For waterproofing and protection of structure, Concrete, columns and beam.

### Coverage

1-1.2 Kg/Sqm in 2 coats or as recommended over primed surface for best results

### Packing

**ENIROOF EMB** is available in 4 Kg, 20 kg pails and 200 kg plastic drums.

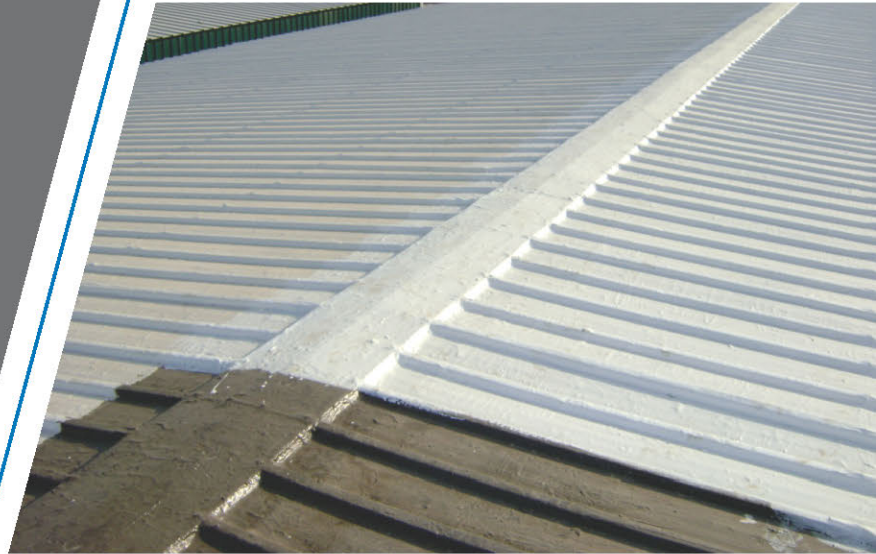


## ENIROOF SPR



### High Solid UV Resistant Flexible Acrylic Waterproofing and Heat Reflective Coating

**ENIROOF SPR** is a single component, special synthetic resin based waterproof and heat reflective coating. Due to its excellent flexibility and thixotropic nature it is an ideal product for vertical and horizontal surfaces. It is a single pack, very economical and pollution free waterproof coating. **ENIROOF SPR** is a scientific blend of waterproofing polymers as well as heat reflecting additives, that makes **ENIROOF SPR** a complete breathable waterproof membrane that expel excessive heat too. it has excellent solar insulation capacity.



### Advantages

- Life and durability of the structure is increased.
- Easy application.
- No mixing or heating required.
- Lightweight compared to conventional roofing systems, thereby loading on the roofs is reduced. Provides seamless and joint free seal throughout the surface. Lower labour cost due to easy, simple and quick application, leading to early completion and time saving.
- Provides insulation due to solar reflection.
- Excellent bonding to most building material.

### Recommended Uses

- Waterproofing of roof slabs, terraces, balconies, sunshades, parapet walls, etc. It provides additional waterproofing and protection when used as base and/or intermediate coat in brickbat coba and / or IPS flooring.
- Waterproofing cum decorating of external plastered walls.
- Waterproofing of new surfaces as well as for repair of old surfaces, whether previously treated or not.

### Coverage

1-1.5 Kg/Sqm in 2 Coats or as recommended for best results.

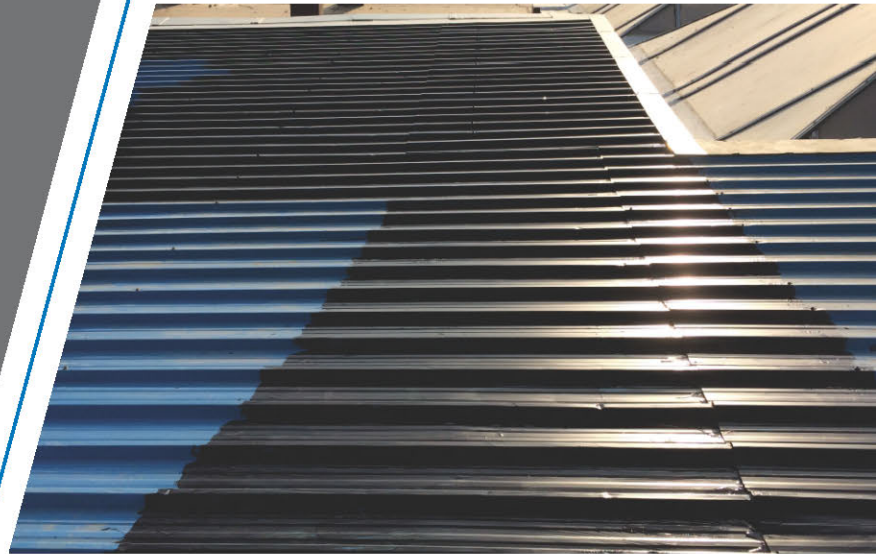
### Packing

**ENIROOF SPR** is available in 5 Kg, 20 kg pails and 200 kg plastic drums. Also available in standard Colours like Terracotta, Green and Grey colour.

## ENIROOF EMB PU

### Polyurethane Based Waterproof Coating

**ENIROOF EMB PU** is a single component black in colour pitch free high & long moisture cured polyurethane modified waterproof coating.



### Advantages

- Highly resistant to oxidation and Ozone degradation because of unique additives used in compounding it.
- Superior wetting and adhesion properties ensure a durable bond highly resistant to peeling, chipping, and separation for a longer life.
- Has the unique property of adapting itself over the irregular contours of the deck and forming a monolithic coating.

### Recommended Uses

- For waterproofing or vapor-barrier protection of foundation, inverted roofs, basements, split slabs, slab on grade, car deck, etc.
- Recommended also as a protective coating for building exteriors, metals, woods, etc.
- Ideal waterproofing system for concrete roof, over polyurethane foam slabs insulation, polyester built up roofs, masonry and concrete walls.
- Recommended for protection of metal surfaces & exposed concrete in corrosive atmosphere.
- Recommended for use in under tile areas as bathroom, kitchens, basements, effluent tanks and other wet areas.

### Coverage

1-1.8 Kg/Sqm of **Eniroof EMB PU** over primed surface for best results.

### Packing

**ENIROOF EMB PU** is available in 20 kg pails and 200 kg plastic drums.

# INTEGRAL WATERPROOFING COMPOUND

## ENIROOF SPU



### Polyurethane Based Sun Reflecting UV Resistant Waterproof Coating

**ENIROOF SPU** is a single component polyurethane modified flexible, UV resistant reflective waterproof coating for terraces / roofs / domes / etc.



### Advantages

- Highly flexible polyurethane modified waterproof coating.
- Excellent adhesion to concrete.
- Easily adapts to the contours of surface forming a monolithic coating.
- Tough & resilient coating can bear normal light foot traffic.

### Recommended Uses

- All types of roofs / AC roofs / Corrugated sheets / can also be used steel / wood / masonry.

### Coverage

1.5-1.8 Kg/Sqm in 2 coats for best results.

### Packing

**ENIROOF SPU** is available in 1 kg, 5 kg, 20 kg pails and 200 kg plastic drums.

## ENIROOF BLACK



### Elastomeric, Bituminous Black Waterproof Coating

**ENIROOF BLACK** is a single component bitumen modified flexible impermeable waterproof coating dries to an elastic flexible, impermeable waterproof coating.



### Advantages

- Single, cold applied, easy to use waterproof coating.
- Good for applying on concrete/masonry.
- Protects from soil acids/sulphates & chlorides.
- Also works as a vapor barrier.

### Recommended Uses

- Useful as protective coating on concrete and brick foundations, retaining walls, timber, metals, etc.. Damp-proofing of structures, regular surfaces like concrete and asbestos.

### Coverage

1.2 Kg/sqm in 2 Coats for best results.

### Packing

**ENIROOF BLACK** is available in 20 kg pails and 200 kg plastic drums.

### Cement Based Waterproofing Slurry

**AQUAGUARD 1C** is a single component Cement based waterproofing slurry for general application as a underlay. It forms a rigid coat .It takes both Positive and negative pressure, and specially works very well in Negative side waterproofing.



### Recommended Uses

- As an underlay where waterproofing needs to be done from Negative side. As a waterproof Slurry for various waterproofing needs where negative side leakages are foreseen.
- **AQUAGUARD 1C** can be used as a standalone waterproofing system or can also be used in conjunction with other waterproofing systems. Please consult the technical cell for more details.

### Coverage

Based on Application. Typically 2kgs/Sqm will give a 1 mm DFT, and based on the severity of the negative side leakages dosages and film thickness will vary.

### Packing

**AQUAGUARD 1C** is packaged in 25 Kg Bag.

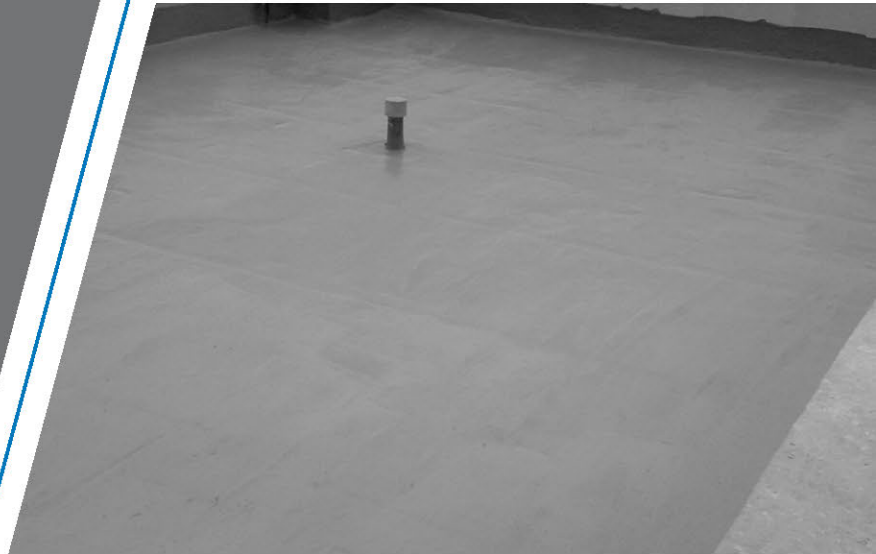
# CEMENT BASED WATERPROOF COATING

## AQUAGUARD 2C 40



### Two Component Cement Modified Flexible Waterproof Coating

**AQUAGUARD 2C 40** is a 2 component Cement modified Flexible System for waterproofing Modified with high solids pure acrylic polymers, this material exhibits excellent bond strength with reduced permeability. **AQUAGUARD 2C 40** forms a breathable protective coating, weather resistance. The coating provides seamless resilient and flexible waterproofing which is suitable for roofs terraces Wet areas and water tanks.



### Recommended Uses

- Water proofing of basements, toilet, terraces, roofs, swimming pools, water tanks, etc.
- Suitable for general concrete repairs.
- It gives excellent bond strength.
- It can be used for protection of concrete against corrosion, salt attack, etc.

### Coverage

1.2-1.8 kg/sqm or as recommended based on application applied in 2 coats. Typically, a coverage of 1.8kg/Sqm will give a DFT of 1mm.

### Packing

**AQUAGUARD 2C 40** available in 3kg ,15 Kg composite packs. Mixing Ratio is 2:1, 2 Parts of Powder and 1 Part of Liquid Polymer.

# CEMENT BASED WATERPROOF COATING

## AQUAGUARD 2C 50



### Two Component Flexible Crack Bridging Waterproof Coating

**AQUAGUARD 2C 50** is a two component highly flexible waterproofing system. The dried system provides excellent adhesion, waterproofing properties, crack bridging, elongation, flexibility apart from being UV stable coating. Hence the coating can be used for exposed conditions.



### Advantages

- Easy to use - Easy to apply by brush, roller or squeegee.
- Durability - Highly durable and UV tolerant.
- Adhesion - Excellent bond strength to porous and non-porous concrete surfaces.
- Flexibility - The Part 'B' component is specially blended copolymer of acrylic latex which improves adhesion, flexibility and waterproofing characteristics.
- Anti-carbonation - A membrane of 1mm to 1.5mm thickness provides an excellent shield against the penetration of carbon dioxide and chloride ions.
- Waterproofing - Excellent even under pressure.
- Vapour Permeability - A fully cured membrane of 1mm to 3mm thickness is vapour permeable and allows the substrate to breath.
- Non toxic & crack bridging - A fully cured membrane is non-toxic, hard wearing seamless shield capable of bridging surfaces cracks.

### Recommended Uses

- Basements, Raft, Retaining Walls, Roof slabs, such as parking decks, roof decks & Podium Slabs, Green Areas, Planter boxes.
- Waterproofing under terrazzo or tile floors, shower-pans, kitchen, laundry and bathroom floors.
- Inside elevated swimming pools.
- Lining/Waterproofing of water retaining structures.
- Water Tanks - **Aquaguard 2C 50** can be used with outstanding success as a lining for emergency water storage tanks
- **Aquaguard 2C 50** fills and covers crack and because of the flexibility allows them to move with changes in temperature.
- The product is firmly bonded to the substrate so water cannot flow underneath the lining as it does with sheet lining materials.

### Coverage

1.2-2.5 Kg/Sqm based on application and recommendation in 2 coats. Typically, a coverage of 1.8kg/Sqm will give 1 mm DFT.

### Packing

**AQUAGUARD 2C 50** is available in a 15kg prepacked pre-weighed pack consisting of a dry power (Part-A) and liquid polymer (Part-B).  
Mixing Ratio is 2:1

# CEMENT BASED WATERPROOF COATING

## AQUACRETE BA 30



### Bonding Agent and Cement Modifier

**AQUACRETE BA 30** is a single component, acrylic modified polymer, consisting of liquid additives. It can be used as a waterproof slurry coat mixed with cement as well as a bonding agent.



### Recommended Uses

- For general purpose waterproofing Applications
- Suitable for concrete repairs.
- Water proofing of, toilet, terraces, roofs, water tanks, Chajjas and wet areas etc
- It can be used for protection of concrete against corrosion, salt attack, etc.

### Coverage

1 kg. **AQUACRETE BA 30** mixed with 2-2.5kg of neat cement will cover approx. 2.5-3 sqm area in 2 coats depending upon the surface and porosity. Site trials recommended for ascertaining coverages.

### Packing

**AQUACRETE BA 30** is packaged in 1 Kg, 5 Kg, 20 kg, 50 Kg and 200 Kg containers.



# CEMENT BASED WATERPROOF COATING

## AQUAGUARD – 50% ®



### Acrylic Co Polymer Emulsion

**AQUAGUARD 50% ®** is a single component, ACRYLIC polymer-based emulsion consisting of polymer and liquid additives. It can be used as a waterproof membrane for small span terraces, balconies, and roof slabs Chajjas and wet areas. It develops an excellent bond to most building material hence becoming a part of the concrete.



### Advantages

**AQUAGUARD 50% ®** is an ACRYLIC based polymer used for making of cement based waterproofing slurry that is flexible and can be used as coating for control of efflorescence.

**AQUAGUARD 50% ®** can be used as bonding agent also. **AQUAGUARD 50% ®** is having more than 50 % active ingredients and therefore it is the best cement based waterproof slurry for coating on concrete and all building surfaces required for waterproofing.

### Recommended Uses

- Water proofing of basements, toilet, terraces, roofs, water tanks, Sloping roofs and wet areas, etc.
- Suitable for general concrete repairs.
- It gives excellent bond strength.
- It can be used for protection of concrete against corrosion, salt attack, etc.

### Coverage

1 Kg **AQUAGUARD 50% ®** mixed with 2 Ltr. water and 5 Kg of neat cement will cover appx. 4.5 sqmt – 5.0 sqm areas in 2 coats depending upon the porosity of the surface. 1:2:5 Ratio of mixing.

### Packing

**AQUAGUARD 50% ®** is packaged in 5 Kg. and 20 kg container.

# CRYSTALLINE WATERPROOF SYSTEM

## STARKRYST 110 WP



### Crystalline Waterproofing Compound

**STARKRYST 110 WP** is an integral crystalline waterproofing compound which penetrates and waterproofs concrete in depth. It reduces porosity and reduce water penetration.



### Recommended Uses

- Reservoirs Swimming Pools, Basement
- Underground Vaults.
- Secondary Containment Structures.
- Tunnels and Subway Systems.

### Advantages

- Permanently waterproofs concrete
- Protects concrete and reinforcement from harsh environments
- Increases the durability and lifespan of concrete
- Lowers the cost of waterproofing by up to 40%
- Significant reduction to your construction schedule
- Confirms to: (IS 2645, DIN 1042)

### Recommended Dosage

It is advisable to mix 0.8 kg (800 Gms) Of **STARKRYST 110 WP**/Bag of 50Kg cement in the concrete mix. Strongly recommend site trials before large scale usage.

### Packing

**STARKRYST 110 WP** is packaged in 25 Kg Bags.

# CRYSTALLINE WATERPROOF SYSTEM

## STARKRYST 770



Surface Applied Crystalline Waterproofing System (IS 2645, DIN 1042)

**STARKRYST 770** is a single component cement based crystalline waterproof coating for waterproofing of concrete. The active chemicals react with the available moisture & form crystals & block the porosities making the concrete waterproof.



### Advantages

- Resists extreme hydrostatic pressure
- Becomes an integral part of the substrate.
- Can be applied to the positive or the negative side of the concrete surface
- Can be applied on damp surface.
- Cannot puncture, tear or come apart at the seams
- Does not require sealing, lapping and finishing of seams at corners, edges or between membranes

### Recommended Uses

- Reservoirs.
- Sewage and Water Treatment Plants.
- Underground Vaults.
- Secondary Containment Structures.
- Foundations.
- Tunnels and Subway Systems.
- Swimming Pools.
- Parking Structures.

### Coverage

For Brush Application: Spread Rate 1.0 to 1.5 kg/sqm (3 parts powder to 1 part water)

For Spray Application : Spread Rate 1.0 to 1.5 kg/m<sup>2</sup> 5 parts powder to 3 parts water (ratio may vary with equipment type)

### Packing

**STARKRYST 770** is packaged in 25 Kg Bags.

## DI PRIMER

### Universal Multipurpose Primer

**DI PRIMER** is a blend of chemicals based on SBR, which has a property of deep impregnation on porous substrates thereby creating a uniform surface for the subsequent layer. It also helps in bonding the loose particles on the substrate specially in Old concrete structures.



### Advantages

**DI PRIMER**, having a deep impregnating action, gives bonding from within the surface hence the result for topcoats are very good. It also helps seal all the dust particles on the surface, which again results in better bonding between surface and topcoats.

### Recommended Uses

- Can be used as a primer coat under all waterproof coatings system.
- Can be used as a sealer to seal porous substrates like concrete, sandstone etc.

### Coverage

6-7 Sqm/kg/coat or as recommended based on application subject to porosity of the concrete substrate.

### Packing

**DI PRIMER** is packaged in 5 Kg & 20 Kg containers.

# CONCRETE REPAIR PRODUCTS

## AQUAGUARD BA 20

### Acrylic Based Bonding Agent



**AQUAGUARD BA 20** is a single component, ACRYLIC based polymer consisting of polymer and liquid additives. It can be used as a bonding agent for old to new concrete. It develops an excellent bond to most building material hence becoming a part of concrete repair.



### Recommended Uses

- As a bonding agent for old to new concrete.
- Suitable for general concrete repairs.
- It gives excellent bond strength.
- It can be used for protection of concrete against corrosion, salt attack, etc.

### Coverage

For optimum results mix 1 kg. **AQUAGUARD BA 20** mixed with 2-2.5kg of neat cement will cover approx. 2.5-3 sqm area in 2 coats depending upon the surface and porosity. Site trials recommended for ascertaining coverages.

### Packing

**AQUAGUARD BA 20** is packed in 5 kg, 20 kg and 50 Kg packs.

# CONCRETE REPAIR PRODUCTS

## AQUACRETE – 30%

SBR Modified Bonding Agent for Old to New Concrete Application



**AQUACRETE 30%** is a single component, SBR based polymer, consisting of polymer and liquid additives. It can be used in combination with cement as a waterproof coating for terraces, balconies and roof slabs. It develops an excellent bond with concrete & to all building materials. **AQUACRETE 30%** can also be used for concrete repair as primer or PMM.



### Advantages

**AQUACRETE 30%** is a SBR based polymer used for making of cement based waterproofing slurry that is flexible and can be used as coating for control of efflorescence. **AQUACRETE 30%** can be used as bonding agent also.

### Recommended Uses

- Water proofing of toilet, terraces, roofs, Chajjas etc.
- Suitable for general concrete repairs.
- It gives excellent bond strength.
- It can be used for protection of concrete against corrosion, salt attack, etc.

### Coverage

As a Bonding agent:

1 Kg. **AQUACRETE 30%** mixed with 2Kg neat cement covers approx. 2.0-2.5 sqm area in 2 coats depending upon the surface.

As a waterproof coating:

1 Kg. **AQUACRETE 30%** mixed with 2 Ltr. Water and 2.5 Kg neat cement covers approx. 2.0-2.5 sqm area in 2 coats depending upon the surface.

### Packing

**AQUACRETE 30%** is packaged in 5 Kg. and 20 kg containers.

# CONCRETE REPAIR PRODUCTS

## ENIPOXY-BA 304

### Epoxy Bonding Agent



**ENIPOXY-BA 304** is a two-component epoxy-bonding agent specially designed for old to new concrete.



### Advantages

- Pre-packaged systems to ensure correct mixing.
- Excellent bonding properties of new concrete to old concrete, steel, brickwork and most other substrates common to construction.
- Takes up and transfers tensile and compressive loads.
- Cured System exhibits High resistance to water and alkalis.
- Correctly designed pot life permits efficient progress.
- Ease of application by brush or roller.

### Recommended Uses

- Structural bonding of new concrete or hydraulic mortar to old concrete, brickwork, masonry, natural and synthetic stone, glazed brick, tiles, steel and aluminum.
- On-site concrete extensions and modifications to existing concrete structures. =Joint less bonding of construction joints in sewage systems, canals, gullies, reservoirs, basins, irrigation systems.
- Closing off shrinkage joints in ceilings, floors, decks, ramps, walls, retaining walls and concrete pavements.
- Structural bonding of cement toppings and screeds.

### Coverage

Approx. 0.25 kg/m<sup>2</sup> of Bonding Agent for new concrete, depending upon surface porosity and working temperature,

### Packing

**ENIPOXY-BA 304** 4 Kg. and 14 Kg Pre-weighed and prepacked.

## STAR CRACKFILL

Acrylic Polymer based Crack Filler

**Star Crack Fill** is an acrylic copolymer based white thixotropic paste specially formulated for sealing static cracks in concrete and Plaster surfaces with excellent movement accommodation.



### Advantages

- Easy to apply single component product.
- Excellent product for plaster cracks upto 5 mm.
- Excellent adhesion and elasticity.

### Recommended Uses

- Exterior & interior surfaces.
- Plastered surfaces.

### Coverage

Approx. 25 Rmt/kg for 5 mm wide cracks.

### Packing

**Star Crack Fill** is available in 1Kg, 5 Kg and 20 Kg.



### Micro Concrete for Repairs

**STARMICRO C** is a general-purpose non-shrink, cementitious, flowable high strength micro concrete for repairs with high strength precision concrete. Free flowing on site, suited for thickness up to 40 mm to 100 mm. Suitable for various structural strengthening measures such as encasement build-ups, jacketing etc.



### Advantages

- Pumpable - Can be pumped or poured into restricted locations.
- Flowable - Flowable mortar hence does not require compaction.
- Shrinkage compensation – Controlled expansion system which compensates for shrinkage and settlement in the plastic state.
- Strength - Develops high initial and ultimate compressive strength.
- Moisture resistant - Offers excellent resistance to moisture ingress.
- Durability - Makes repaired sections highly durable & compatible to parent concrete.
- Thickness build up - Can be applied at 100 mm thickness at one stroke
- Chloride content - Contains no chloride-based additive so prevents corrosion of reinforcement.
- Early reinstatement - Rapid strength gain helps in early reinstatement & removal of shuttering

### Recommended Uses

- General repair and renovation of decayed defective or damaged concrete like beams, columns, walls, roads and honey-combed concrete, where access is required, and compaction is not available.
- Jacketing of RCC columns - strengthening of vertical members.
- Conforms To: (ASTM C-1107 Grade C, BS-1881, BS-4550, CRDC-821-82 A, BS-6319)

### Coverage

A Bag 25 Kg **STAR MICRO C** will yield 13 litres of mixed material at a w/p ratio of 0.14 to 0.16 @ 30°C,. Water Powder ratio may be adjusted based on the site condition and requirements.

### Packing

**STARMICRO C** is available in 25 kg bag.

# CONCRETE REPAIR PRODUCTS

## ENICEM 100

### Cement Based Self Levelling Underlay



**ENICEM 100** is a cement based self levelling system modified with graded fillers and chemicals and when laid gives a self levelling screed. Ideal as an underlay for many other applications and can be laid from 2 to 10mm thickness.



### Advantages

- One pack Product, easy to use.
- Time saving, self levelling, gives quick and easy laying.
- Excellent bonding and adhesion with concrete.

### Recommended Uses

- **ENICEM 100** can be used as an underlay for all applications like Vinyl floorings, Epoxy Screeds, Epoxy Self Levelling floors etc.
- For levelling undulated surfaces in concrete and where quick turnaround is required.
- **ENICEM 100** can be laid up-to 10 mm on a single layer application.

### Coverage

Typically 2.2Kgs/Sqm will give 1 mm thickness. Based on application thickness needs to be ascertained. Depending on the substrate condition a universal primer either polymer based or Epoxy based can be used. Consult Technical Cell of Xchem.

### Packing

**ENICEM 100** is available in 25 kg bag.

## STARMORTAR HS C

### High Strength Polymeric Cement Mortar



**STARMORTAR HS C** is a single component cement based enriched with fine additives, fibre reinforced restoration mortar. Used for structural repair new and old concrete. Applied manually or mechanically.



### Advantages

- Easy to apply product.
- Excellent Bonding properties.
- Suitable for hand and machine application.

### Recommended Uses

- Concrete repair affected by repeated loads.
- Structures affected by marine environment.
- Bridges, harbours, dams.
- Repair of prefabricated concrete elements.
- Repair of concrete structures with carbonation process.
- Repair of damaged areas in industries due to aggressive environment.
- Conforms to: BS 4550, BS 1881, BS 6319, ASTM C - 109

### Coverage

Mix 4 litres water to 25 Kg **STARMORTAR HS C** for repair mortar and 4.5 litres for pump/spray application. 25 kg bag will cover 3 to 3.2 sqm with recommended thickness of 4mm.

### Packing

**STARMORTAR HS C** is available in 25 kg.

## STARMORTAR EP 2C

### Epoxy Repair Mortar



**STARMORTAR EP 2C** is thixotropic solvent free, two component epoxy-based repair mortar. The base component is white coloured, and the hardener is grey to facilitate ease of mixing.



### Advantages

- Excellent bonding ability with almost every construction material.
- No primer required.
- Develops early strength, become stronger than concrete in just 120 minutes
- Easy application as it can be poured, trowelled or mixed with aggregates to produce mortars.
- High chemicals and oil resistant

### Recommended Uses

- For filling blow holes, making fair slightly damaged concrete, eliminating minor irregularities prior to painting or coating.
- Highly recommended for repair of structures that will be permanently submerged in water, sea water like water intake areas in power plants etc.
- As an adhesive for bonding prefabricated concrete bridge segments.
- Conforms To: ASTM-C 881-Type I & IV, Grade III, Class B & C Passes ASTM-C 883 & ASTM-C 884

### Coverage

5 kg, pack yields 3.22 litres & covers 3.22 sqm at 1 mm thickness.

### Packing

**STARMORTAR EP 2C** is available in 5 kg and 25 kg pack

## STARMORTAR EP 3C

### Epoxy Repair Mortar

**STARMORTAR EP 3C** is a three-component solvent free epoxy based mortar, designed for fast and durable repairs to concrete, particularly in vertical or overhead situations. It can be applied at a thickness between 5mm to 30mm in vertical, and 5mm to 25mm in overhead in one layer.



### Advantages

- Excellent bonding ability with almost every construction material.
- No primer required.
- Develops early strength, become stronger than concrete in just 120 minutes
- Easy application as it can be poured, trowelled or mixed with aggregates to produce mortars.
- High chemicals and oil resistant

### Recommended Uses

- For speedy and permanent repairs to concrete structures, especially in overhead and vertical situations where
- "High Build" repairs are required and impermeability to water and resistance to aggressive chemicals is essential.
- For emergency repairs to concrete columns, lintels and roof-beam faces, to provide a dense impermeable finish and protect the embedded reinforcing steel.
- Conforms to: (ASTM - C 881 - Type I & Grade III, Class B & C Passes ASTM- C 883 & ASTM - C 884)

### Coverage

A 25 kg bag after mixing with 11% of water will produce 12.4% liters of mortar. If aggregates are added then volume increases accordingly.

### Packing

**STARMORTAR EP 3C** is available in 25 kg pack.

## STARMORTAR FASTSET

### Rapid Setting Mortar

**STARMORTAR FASTSET** is a rapid setting mortar made from special cements, fine aggregates, additives and fibers. It requires addition of potable water for mixing. It produces high early strength and achieves initial set in 10 to 25 minutes @28°C Final set in 30 – 45 minutes @28°C. Initial & final set times are depended on ambient condition may vary. For traffic after minimum 2 hours @28°C of drying.



### Advantages

- Ready to use: Only add water at site.
- Adhesion: Bonds well to damp or wet concrete.
- Chloride free.
- Rapid Setting.
- Low heat development: Prevents cracking / debonding. Easy to use: easily applied by hand or trowel in thicknesses from 5 to 100mm in several applications.

### Recommended Uses

- **STARMORTAR FASTSET** is for quick repairs of horizontal concrete surfaces such as airport runways, expressways, highways, bridge decks, sidewalks, parking decks, loading docks and floors. It may be used in vertical application with proper form work and care.
- Conforms to: ASTM C - 109

### Coverage

A 25 kg bag after mixing with 11% of water will produce 12.4% liters of mortar. If aggregates are added then volume increases accordingly.

### Packing

**STARMORTAR FASTSET** is available in 25 kg pack.

## ENIROOF CLEAR

### Clear Polymeric Waterproof Coating



**ENIROOF CLEAR WATERPROOFER** is a blend of special resin, polymer, organic and inorganic compound. It waterproofs the concrete and other absorbent surfaces very effectively. They give glossy finish and enhance the colour of the substrate. It is single pack easy to apply liquid.



### Advantages

- Excellent coating for exterior brick tiles, dholpur marble and other stones.
- Blocks all the pores, prevent water penetration through capillary action.
- Protective seal prevents stain and dirt penetration.
- Being transparent, cause no changes in colour or look of the substrate and maintains the natural look.
- Film will not yellow or darken with time.

### Recommended Uses

- Excellent water proofer & repellent for external facade rain facing walls and can also be used on mosaic, dholpur, and marble, etc. where aesthetically retention of original colour is required.

### Coverage

The coverage depends on the type of the surface.

1 Kg **ENIROOF CLEAR** covers 2.5-3.0 sqm area in 2 coats, subject to type of application and porosity of surface.

### Packing

**ENIROOF CLEAR** is Available in 5 kg & 20 kg.

## STARSEAL HD

### Silane Siloxane Based Water Repellent



**STARSEAL HD** is a single component 100% active Silane Siloxane based water repellent, which yields a micro emulsion immediately upon diluting with water. This micro emulsion provides excellent water repellence when impregnating or priming mineral and even alkaline substrates. **STARSEAL HD** is formulated to treat a variety of mineral substrates like architectural concrete, concrete blocks, split face blocks, pavers, stucco, porous and dense brick/clay tiles. **STARSEAL HD** of application. The repellency improves considerably after one week of application. provides water repellence within 24 hours Complies with Federal Specification SS-W-1 10C.



### Advantages

- Excellent coating for exterior brick tiles, dholpur marble and other stones.
- Blocks all the pores, prevent water penetration through capillary action.
- Protective seal prevents stain and dirt penetration.
- Being transparent, cause no changes in colour or look of the substrate and maintains the natural look.

### Recommended Uses

- Surface treatment of absorbent, mineral and even alkaline substrates, such as natural stone, brick, concrete and sand-lime bricks, as well as for mineral paints and stuccos.
- Making aerated concrete water repellent
- Low-fired clay products immediately after they have been made, e.g., roof tiles, facing bricks, floor tiles and flower pots.
- Injection into buildings just above ground level to form a damp resistant course. Surface treatment for concrete.

### Coverage

1 Kg **STARSEAL HD** covers 7-8 sqm area, The coverage depends on the type of the surface, porosity and dilution.

### Packing

**STARSEAL HD** is Available in 5 kg & 20 kg.



## ENIWEATHER BRIGHT

Weatherproof Flexible UV Stable External & Internal Coating



**ENIWEATHER BRIGHT** is a blend of special resin, polymer, organic and inorganic compound. It waterproofs the concrete and other absorbent surfaces very effectively. **ENIWEATHER BRIGHT** give bright white finish to the substrate. It is single pack easy to apply liquid.



### Advantages

- Excellent coating for exterior walls.
- Blocks all the pores, prevent water penetration through capillary action.
- Being white, reflect sun rays and keep concrete cool.
- Film will not yellow or darken with time.
- Eniweather Bright can be tinted to desirable colour.

### Recommended Uses

- External walls, Internal Walls, parapets / Chajjas. Top coat over waterproofing treatment, Available in colours to match the colour scheme.

### Coverage

1 kg **ENIWEATHER BRIGHT** covers 2.5-3 sqm area in 1 coat. The coverage depends on the type of the surface, porosity and dilution.

### Packing

**ENIWEATHER BRIGHT** is Available in 1 kg, 5 kg & 20 kg. Available in Standard Colours.

## STAR CURE 100

### Acrylic Polymer Based Curing Compound



**STAR CURE 100** is water based acrylic emulsion specially selected for its water retention properties. The dried film is either colourless OR white as per requirements of the client. **STAR CURE 100** is specially formulated product for use under hot climatic conditions. The white pigment reflects light and heat of sun and minimizes the rate of evaporation & reduction of surface cracking.



### Advantages

- Single component.
- Forms a vapor barrier film.
- No other curing material or method required.
- Can be applied on damp surface.
- Eco-friendly - water based, free from solvent, oils waxes, chlorinated or saponifiable materials.
- Excellent evaporation controlling compound, resulting in moisture retention.
- Excellent moisture retention for freshly placed concrete, resulting in minimizing shrinkage cracks, Suitability for foot traffic UV, chemical and abrasion resistant.
- Versatile - can be applied equally well to freshly placed or existing concrete.
- Cost effective - can be overcoated with water based and solvent based acrylic coatings, epoxy coatings, polyurethane coatings etc.

### Recommended Uses

- All types of concrete and plaster surfaces which requires water curing. Used to cure & seal concrete and renders without stains caused by resin based curing compounds.
- Conforms to ASTM: C 309

### Coverage

3 to 4.5 sqm / kg depending upon the concrete & porosities.

### Packing

**STAR CURE 100** is Available in 20 kg & 200 kg.

### Coal Tar Epoxy

A two-component high build, amine adducts cured **ENIPOXY – CT 340** coating exhibits outstanding water and crude oil resistance. The high epoxy content produces a coating with excellent resistance to polluted water, such as sewage and provides outstanding corrosion protection when applied in thick films.



### Advantages

- Ready to use working packs ensures correct mixing.
- Excellent bonding properties of new concrete to old concrete, steel, brickwork and most other substrates common to construction.
- Takes up and transfers tensile and compressive loads.
- High resistance to water and alkalis.
- Correctly designed pot life permits efficient progress.
- Ease of application by brush or roller.

### Recommended Uses

**ENIPOXY – CT340** can be applied to blast cleaned steel and concrete particularly when immersion or below grade service is required. Can be applied to internal surfaces of pipelines, floating and fixed roofs of crude oil, water storage tanks, sewage treatment pipelines, plants and many other industrial installations.

### Coverage

Coverage depends upon the nature of the surface to be treated. But on an average smooth surface would give coverage of 8 sqm./kg./coat. 1 coat will give approx. 80-100 microns dry film thickness.

### Packing

**ENIPOXY – CT 340** is packaged in 4 Kg and 20 kg prepacked containers.

## ENISEAL – NS



### Two-Part Polysulfide Joint Sealant

**ENISEAL – NS** is an elastomeric two-part polysulphide joint sealant, which cures to form a tenacious bond to most common building materials and readily accommodates large cyclical movements over a wide range of temperatures.



### Advantages

- Superb flexibility and movement capability up to 25%.
- Adheres to most common building materials.
- Excellent resistance to aggressive weathering.
- Resistance to water, most solvents, and petroleum-based products, diluted acids and alkalis.

### Recommended Uses

- **ENISEAL – NS** has a Thixotropic, non – sag formulation for joints from horizontal to vertical. It may be used as an exposed joint sealant to most types of building materials such as concrete, brick, glass, steel, aluminium and wood.
- Typical uses are for crack control and sealing joints in:
  - Vertical and horizontal building super structures.
  - Subways, basements, floors wall and roof coping.
  - Bridges, sea walls and roadways.

### Coverage

Depends on joint size.

For joint size 24X12 , 460-480 gms **ENISEAL – NS** required to fill 1 RMT joint.

### Packing

**ENISEAL – NS** is available in 4 Kg Pack

## ENISEAL PU

### Polyurethane Joint Sealant

**ENISEAL PU** is elastic, single component, self-leveling, moisture curing polyurethane sealant specifically developed to be used as a multi-purpose floor joint sealant in applications where high chemical resistance to fuels, oils and hydro carbons is required.



### Advantages

- Non-Staining including Hydrophobic staining.
- Good primer less adhesion on many common construction substrates.
- Excellent adhesion to a wide variety of substrates.
- High movement accommodation.
- High UV & aggressive atmosphere resistance.
- Comprehensive color range.
- Environmentally friendly.
- Excellent low temperature gun ability Improved gun & tooling characteristics Ideal for expansion joints in buildings.

### Recommended Uses

- For all type of joints of maximum width 35 mm.
- The product is suitable for sealing expansion, construction and dummy joints in rigid pavements, apron areas, runways, taxi tracks, parking bays, hangars and internal and external pedestrian and trafficked joints.
- Concrete roads, petrol stations, warehouses, showrooms etc are other application areas.

### Coverage

Depends on width and depth of the joint.

One sausage of **ENISEAL PU** covers 7-8 running meter area for joint size of 10 mm x 5 mm

### Packing

**ENISEAL PU** is available in 600ml Sausage/ 24 Pcs per carton.

## STARFLEX TAPE

### Expansion Joint Tape

Is expansion joint sealing system for wide, irregular, high movement joints and cracks. **STARFLEX TAPE** System consists of a modified flexible Functionalized thermoplastic elastomer tape with advanced adhesion using a special adhesive specially designed for its application. When fixed across the joint, the tape allows considerable movement in more than one direction, while maintaining a high-quality seal.



### Advantages

- Advanced adhesion, no heating of tape required.
- Durable, economical, and cost-effective solution.
- Can restore failed joints without removing defective sealant.
- Contractor has advantages of always working on surface of substrate.
- Exceptional adhesion on virtually all common building materials; unmatched compatibility of tape and adhesive.
- Waterproof, weather-, chemical- and root resistant. UV Stable product.

### Recommended Uses

- Expansion Joint system and waterproofing treatment of outside expansion and construction joints.
- Suitable for roofs, storage tanks, pools, reservoirs, additions to structures and parking garages.

### Coverage

Based on Size of the joint

### Packing

Width: 100-1000mm, Thickness 1-2 mm, 20Mtr Roll.

Epoxy Adhesive for Tapes: Enipoxy ERM (TA)

## ENIGROUT GP



Free flow, General Purpose, Non-Shrink, Cementitious Precision Grout

**ENIGROUT GP** is pre-packed free flowing non-shrink, high strength, cementitious grout with wide range of applications is a blend of Portland cement, graded fillers and chemical additives which impart controlled expansion in the plastic state whilst minimising water demand. The low water demand ensures high early strength. The graded fillers are designed to assist uniform mixing and produce a consistent grout.



### Advantages

**ENIGROUT GP** is Ready to use, High early and ultimate strength, Non shrink, Good flow properties, Chloride-free, Non ferrous, Resistant to oil and water penetration, Slight expansion leads to superior bonding to surrounding materials, excellent adhesion.

### Recommended Uses

**ENIGROUT GP** is used for precision grouting where it is essential to with stand static and dynamic loads. Typical applications would be the grouting of base plates of turbines, compressors, boiler feed pumps etc., It can also be used for anchoring a wide range of fixings. These include masts, anchor bolts and fence posts.

### Coverage

Typically a bag of 25 kg powder will give 12.5 liters at a Powder water ratio of 0.40.

### Packing

**ENIGROUT GP** is available in 25 kg bags.

## ENIGROUT HS



Free Flow, High Strength, Non-Shrink, Cementitious Precision Grout

**ENIGROUT HS** is pre-packed free flowing non-shrink, high strength, cementitious grout with wide range of applications. It is a blend of Portland cement, graded fillers and chemical additives which impart controlled expansion in the plastic state whilst minimising water demand. The low water demand ensures high early strength. The graded fillers are designed to assist uniform mixing and produce a consistent grout.



### Advantages

**ENIGROUT HS** is Ready to use, High early and ultimate strength, Non shrink, Good flow properties, Chloride-free, Non ferrous, Resistant to oil and water penetration, Slight expansion leads to superior bonding to surrounding materials, excellent adhesion.

### Recommended Uses

**ENIGROUT HS** is used for precision grouting where it is essential to withstand static and dynamic loads. Typical applications would be the grouting of base plates of turbines, compressors, boiler feed pumps etc., It can also be used for anchoring a wide range of fixings. These include masts, anchor bolts and fence posts.

### Coverage

**ENIGROUT HS** 25 Kg bag yields 13.5 Litres of grout.

### Packing

**ENIGROUT HS** is available in 25 kg bags.



## STARGROUT E-53

### Water Displacing Pourable Epoxy Resin Grout

**STARGROUT E-53** is a pourable, multi-functional high density epoxy grout based on a 2-component solvent free epoxy resin system containing fine fillers. **STARGROUT E-53** exhibits excellent insolubility and displacement characteristics in wet and underwater applications but useable in dry general grouting applications also.



### Advantages

- Suitable for dry, wet, underwater or marine applications.
- Applicable at low temperatures.
- High mechanical strengths.
- Highly insoluble in water and suitable for application by specialist divers.
- Supplied in factory proportioned units.
- Shrink free.
- Can be bulked out with aggregate of thicker pour applications.
- Excellent chemical resistance to water, sea water, waste water, sewage, fuels, oils, dilute acids and dilute alkalis.

### Recommended Uses

- **STARGROUT E-53** may be used for underwater and dry grouting work and offers excellent adhesion to both dry and clean water immersed concrete, stone masonry, brick, wood or steel surfaces.
- Highly insoluble in water and safe for specialist diver use.
- Used for injection of cracks 0.5mm to 40mm wide under water (cracks not conducting a water flow under pressure).
- Ideal for pile jacketing using prepacked aggregate in formwork.
- Mixed with 30% by volume sand a high build paint is formed that is easy to apply under water.
- **STARGROUT E-53** may be used to grout starter bars, baseplate grouting and bolts for dry and underwater construction work.
- The material may also be used as a bonding bridge for underwater concreting and as a pipeline jointing material.

### Coverage

Depends on nature of application area.

### Packing

6 kg and 18 kg net pre-proportioned kits.

## STARINJECT C-55

### Cement Grout Additive

**STARINJECT C-55** is a single pack powder Admixture which when added to cement produces a free-flow, high strength expansive medium. It is a unique product designed to give positive expansion in the plastic and hardened states, producing a low porosity high durability material.



### Advantages

- **STARINJECT C-55** Reduces water/cement ratio in the grout mix ensures low permeability and long-term durability in service.
- High fluidity to make placement or injection of grout easy.
- Chloride -free, Iron-free product.
- Gaseous expansion system Gives positive expansion that eliminates shrinkage and giving excellent adhesion.

### Recommended Uses

- It is used for general purpose grouting of narrow concrete cracks or gaps between concrete and metal structures.
- It is recommended for filling gaps between metal electrical lighting poles base plates and the concrete supporting foundation.
- It is used for cable duct grouting in post tensioned concrete.
- It is used for sealing / filling narrow concrete cracks, grouting machine base plates, stanchion bases and crane rails.
- It is an excellent grout for all horizontal ducts or concrete in situ opened channels installation of pipe lines, cables, ducts, plastic conduits etc.

### Dosage

500 gms per 50 kg bag of cement. Depends on nature of application area. 25 kg Pack yielding 16 litres pumpable grout.

### Packing

500 Gms and 25 Kg bags.

## STARINJECT E-54

### Epoxy Injection Grout



**STARINJECT E-54** is two-part, low viscosity, moisture insensitive injection-liquid, based on high strength epoxy resin.



### Advantages

**STARINJECT E-54** Solvent-free, Suitable for both, dry and damp conditions, Usable at low temperatures, Shrinkage free hardening, High mechanical and adhesive strengths, Hard but not brittle, Low viscosity, Injectable with single component pumps.

### Recommended Uses

- As an injection resin with good adhesion to dry concrete, mortar, stone, steel and wood.
- **STARINJECT E-54** is used to fill and seal voids and cracks in structures such as bridges and other civil engineering buildings, industrial and residential buildings, e.g. columns, beams, foundations, walls, floors and water retaining structures.
- **STARINJECT E-54** conforms to ASTM C 881, Type II and IV, Grade-1, Class E+F

### Coverage

Depends on nature of application area. 1 kg Pack yielding 0.950 liters.

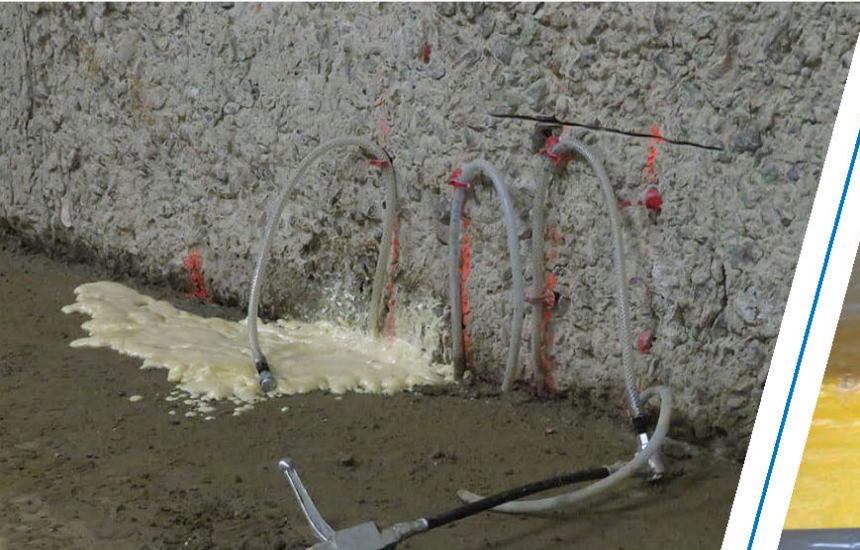
### Packing

18 kg net pre-proportioned kits.

## STARINJECT PU-55

### PU Injection Resin

**STARINJECT PU-55** is single component fast reacting PU Injection foam. The product is injected in leaking cracks to stop the flow of water. It reacts with available water foaming almost instantly. This help in stopping even a heavy leakage in concrete structures such as water retaining structures, basements, tunnels etc.



### Advantages

No reaction takes place unless it is in direct contact with water. it can be injected as a single component system. The free foaming expansion in contact with water is up to 40 times. The reaction speed (foam formation) is influenced by the temperatures of the mixed material, the structure and the contact water, plus the hydrodynamic conditions. In cold temperatures (< +10°C) **STARINJECT PU-55** can be accelerated using PU INJECTION ACCELERATOR.

### Recommended Uses

**STARINJECT PU-55** is used for permanent watertight sealing with some flexibility to absorb limited movement, in dry, damp or water-bearing cracks and joints in concrete, brickwork and natural stone.

### Coverage

Depends on nature of application area.

### Packing

**STARINJECT PU-55** is available in 10 Kg and 20 Kg Pack.

**Xchem Polymers India Pvt Limited** is also into manufacture of Concrete Admixtures required for the construction Industries:

We manufacture various types of Admixtures like Plasticisers, Super Plasticisers, Water reducers, Accelerators and can tailor make a product to our client's requirement.

*We can manufacture All kinds of Admixtures based on:*

- **Lignosulphonates (SLS)**
- **SNF (Sulphonated Naphthalene Formaldehyde)**
- **PC (Polycarboxylate) etc.**

We have state of the art Laboratory for designing concrete and can-do trials and establish admixtures for our clients. With large production capacities and strategically placed manufacturing base ay Valsad we can deliver any Quantities on time to our customers.

*For more details and your requirements please contact your Local Area Manager or contact [info@xchemindia.com](mailto:info@xchemindia.com)*



## BITUMINOUS MEMBRANES



**Xchem Polymers India Pvt Limited** has a sister unit which is into manufacturing of High-Quality Bituminous membranes.

*We can Supply Quality membranes like:*

- **APP Based Torch On Membranes**
- **SBS Based Torch On Membranes**
- **SBS Based Self Stick Membranes**
- **Flash-Strips**
- **Bitumen Primers.**

We have a state-of-the-art manufacturing facility of our own in Gujrat and can supply you quality membranes for all your requirements.

*For more details and your requirements please contact your Local Area Manager or contact [info@xchemindia.com](mailto:info@xchemindia.com).*





## SOME OF OUR PRESTIGIOUS CLIENTS



S. No.	CLIENT NAME	S. No.	CLIENT NAME
1.	K. Raheja IT Park Pvt. Ltd.	38.	Ambience Constructions India Ltd.
2.	Ansal Housing & Construction Ltd.	39.	Chatrapati Shivaji Terminal
3.	Bengal Unitech Universal Infrastructure (P) Ltd.	40.	Raheja Developers (P) Ltd.
4.	Sahara India Comercial Corporation Ltd.	41.	Exl Servies Pvt. Ltd.
5.	Hindustan Lever Limited	42.	RBI
6.	Omaxe Construction Ltd.	43.	CPWD
7.	Parsvnath Developers Ltd.	44.	Kerla Bhavan
8.	Hotel Comfort Inn	45.	Dala Cement Factory
9.	Tata Steel Limited	46.	Club Mahindra Resorst
10.	Space Combine	47.	SG PGI
11.	HP Campus	48.	RDSO
12.	Birla Soft Ltd.	49.	North Delhi Power Ltd.
13.	Wipro Spectramind	50.	MB Group Ltd.
14.	Triveni Engineering & Industries Ltd.	51.	Khetri Trust
15.	Sahara India Comercial Corporation Limited	52.	The Imperial
16.	Haldiram Marketing Ltd.	53.	Orchid Petal
17.	Bharti Infotel Ltd.	54.	Bina Thermal Power Ltd.
18.	NIHO Constructions Ltd.	55.	DLF Limited
19.	Wig Brothers Projects Pvt. Ltd.	56.	Orchid Center
20.	GAP. Inc	57.	Lancer International School
21.	Ansal Buildwell Ltd.	58.	Cadence Design System
22.	I Gate Global Solution Ltd.	59.	Ramada Plaza
23.	Home Cables Pvt. Ltd.	60.	3 C Projects Ltd.
24.	IVRCL Infrastructure & Projects Ltd.	61.	Sethi Group Pvt. Ltd.
25.	Paradise Builders	62.	Hotel Leela Kempski
26.	CCCL	63.	NEERI (National Environment Engineering
27.	Design & Décor	64.	Research Institute)
28.	Ambience Constructions India Ltd.	65.	Ashiana Housing Pvt. Ltd.
29.	Anand Corporate Services Ltd.	66.	Mumbai Airport
30.	Bajaj Auto Ltd.	67.	JSW, Jindals
31.	Perfect Circle	68.	Pullman Group
32.	Gabriel	69.	DPSC
33.	Angelo	70.	TCS
34.	Shapoorji Palonji & Co.ltd.	71.	DLF Mall Of India
35.	Delta Colonizers Ltd.	72.	ESSAR Power Plant
36.	Wynberg Allen School	73.	Gujrat University
37.	N. S. Associates		& Many More...





## NETWORKS

Myanmar | Nepal | Bangladesh | Yemen | Jordan | Ethiopia  
South Africa | Kenya | Kuwait | Bahrain | Tunisia | Oman



Regd. Office:

**XCHEM POLYMERS INDIA PVT. LTD.**

333 P/1, Balda Industrial Park | GIDC Pardi - 396125 | Gujarat  
☎ + 91 89800 37335 | 🌐 www.xchemindia.com

**Marketing Office**

XCHEM Polymers India Pvt. Ltd.  
A-92-C | 2nd Floor | Taimoor Nagar  
New Friends Colony | New Delhi-110025  
☎ +91-11-26328652/53/54 | +91-11-26931888,  
✉ +91-11-26931162 | 📧 info@xchemindia.com  
🌐 www.xchemindia.com

**Overseas Production Unit**

United Arab Emirates -  
XCHEM INTERNATIONAL LLC  
P. O. Box 32635 | Industrial Plot A - 03  
RAK Investment Authority  
Ras Al Khaimah | UAE  
☎ +971 7 2445105 | ☎ +971 7 2432539  
✉ info@xchem.ae | 🌐 www.xchem.ae

**Regional Office**

Saudi Arabia XCHEM International  
C/O Talasouque Trading Establishment  
P. O. Box #01124 | Alfa Commercial  
Centre Office No. 12 Al Salamah  
Hiraa Street Intersection with  
Madinah Road | Jeddah | KSA  
☎ +966 12 6501766

**Canada**

**XCHEM International Canada**  
808 - 120 Dundas Street East  
Mississauga | ON CA L5A1W6

**Egypt**

**XCHEM International**  
Down Town Mall | 4th Floor  
Office E15 Al Ordaniya  
10th of Ramadan | Egypt  
☎ +20554371873 | ☎ +201099121190

**USA**

**XCHEM International USA L.L.C.**  
12700 STAFFORD RD | STAFFORD,  
TX 77477



For Sales Queries **+91 89800 37335**

DISCLAIMER : The brochure is purely conceptual and not a legal offering. Artistic impressions and photographs shown are imaginary. Specifications, coverages and pack sizes are subject to change as per requirements of the projects. (All right reserved)